

MONTHLY MEMBERSHIP PROGRESS REPORT

LOCATION INDIA

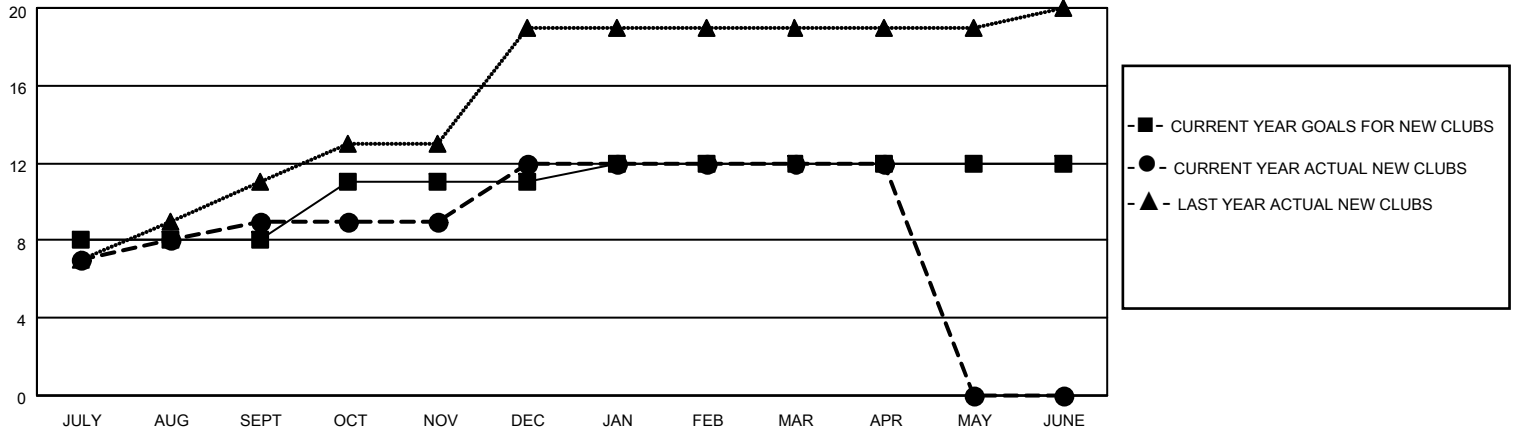
District 322 G

Results as of: 4/30/2022

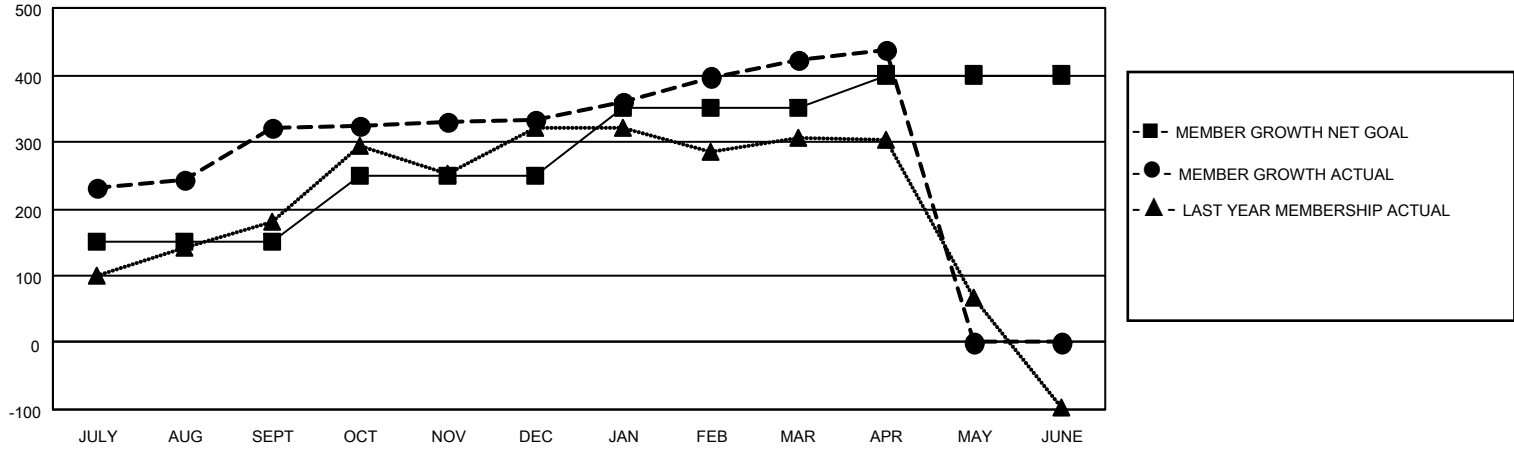
Clubs			
RESULTS FOR 2021-2022			
QUARTER	NEW CLUB GOAL	NEW CLUBS	DROPPED CLUBS
JULY/AUG/SEPT	8	9	5
OCT/NOV/DEC	3	3	1
JAN/FEB/MAR	1	0	0
APR/MAY/JUNE	0	0	0

Members			
RESULTS FOR 2021-2022			
QUARTER	MEMBER GROWTH NET GOAL	MEMBER GROWTH ACTUAL	DROPPED MEMBERS ACTUAL (including transfers)
JULY/AUG/SEPT	150	494	157
OCT/NOV/DEC	100	167	150
JAN/FEB/MAR	100	109	11
APR/MAY/JUNE	50	29	13

GOALS AND ACTUAL NEW CLUBS CUMULATIVE



GOALS AND ACTUAL MEMBERS CUMULATIVE



DROPPED CLUBS: 6	63 CLUBS OF 94 ADDED 1 OR MORE NEW MEMBERS	<p style="text-align: center;"><u>GENDER DISTRIBUTION</u></p> MALE 2,291 (62.10%) FEMALE 1,398 (37.90%) NON BINARY 0 (0.00%) PREFER NOT TO ANSWER 0 (0.00%)
<p style="text-align: center;"><u>DROPPED MEMBERS</u></p> DECEASED 3 CLUB CANCELLED 53 OTHER 275 <hr/> TOTAL 331	CLICK HERE FOR CUMULATIVE MEMBERSHIP DATA	TOTAL FAMILY UNIT MEMBERS 2,070 FAMILY MEMBERS PAYING HALF DUES 1,256